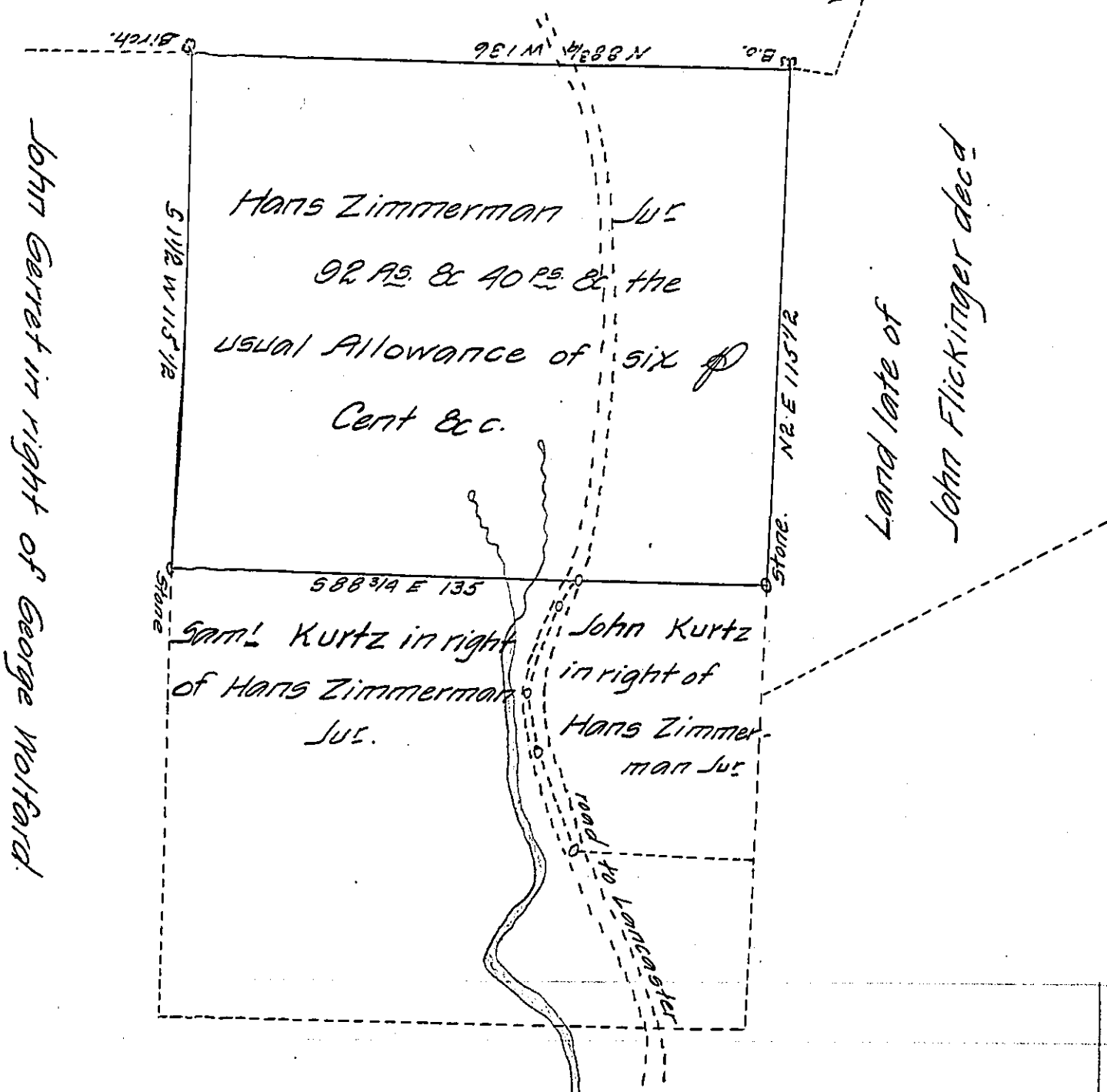


The heirs of Ludwig Bory in right of Nicholas Walter.



A Draught of a Tract of Land Situate in Cocaleco Township Lancaster County containing Ninety two Acres and forty perches and the usual Allowance of six per cent for roads & c. part of 168⁹⁵ & 120²⁵ & the usual Allowance by warrant dated the 10th of May 1799 granted to Hans Zimmermann Jus. Surveyed the above Tract of Land the 30th of September 1828 for the Estate of George Ege Esq^r.

J. Jacob Hibshman D.S.

To Gabriel Hiester Esq^r }
Surveyor General

IN TESTIMONY that the above is a copy of the original remaining on file in the Department of Internal Affairs of Pennsylvania, made conformably to an Act of Assembly approved the 16th day of February, 1833, I have hereunto set my Hand and caused the Seal of said Department to be affixed at Harrisburg, this twelfth day of August 1907.

Henry Houck
Secretary of Internal Affairs.